

# Keep the Yarra Valley



## Fruit Fly FREE

### Queensland Fruit Fly Video 1 worksheet

#### Teachers Answer Sheet

#### SUGGESTED VIC CURRICULUM LINK

- Biological Science:
  - Living things have structural features and adaptations that help them to survive in their environment (VCSSU074)
  - The growth and survival of living things are affected by the physical conditions of their environment (VCSSU075)

For additional learning materials and activities to further address the curriculum, refer to:

- Extension worksheet provided
- FUSE education package:  
<http://bels.boxhill.edu.au/ff/>

#### Where does the Queensland Fruit Fly lay her eggs?

- a) On a branch
- b) On a leaf
- c) Only in Queensland
- d) **In ripening fruit and vegetables**

#### What does the larvae do to fruit and vegetables?

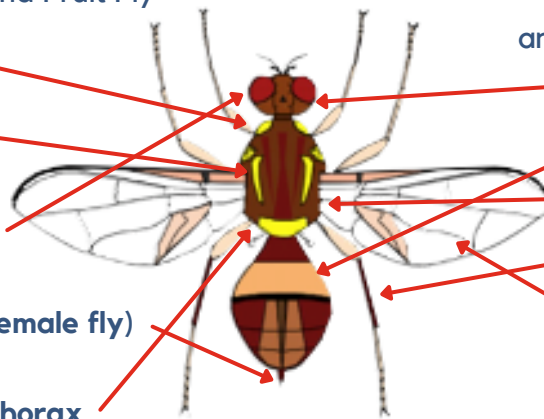
- a) **Burrow into the fruit and make it go rotten and mushy**
- b) Munch holes through leaves
- c) They collect nectar to sweeten the fruit

#### What are the identifying features of the Queensland Fruit Fly?

This image is of a female Queensland Fruit Fly.

Draw a line to connect each feature to the correct part of the Queensland Fruit Fly

- o Yellow shoulder pads
- o Yellow stripes on the back
- o Large reddish brown eyes
- o Ovipositor (Stinger on the female fly)
- o Yellow triangle on base of thorax



Can you connect the following insect anatomy of the QFF?

- o Head
- o Abdomen
- o Thorax
- o Legs
- o Wings

Image by: Andrew Jessup

#### Why is the Queensland Fruit Fly a problem for the Yarra Valley?

- a) Queensland Fruit Fly affects farmers who grow crops for a living in the Yarra Valley
- b) Queensland Fruit Fly can spread from garden to garden
- c) Queensland Fruit Fly destroys our own home grown fruit and vegetables
- d) Queensland Fruit Fly makes our fruit and vegetables rotten and inedible
- e) **All of the above**

# Keep the Yarra Valley Fruit Fly FREE

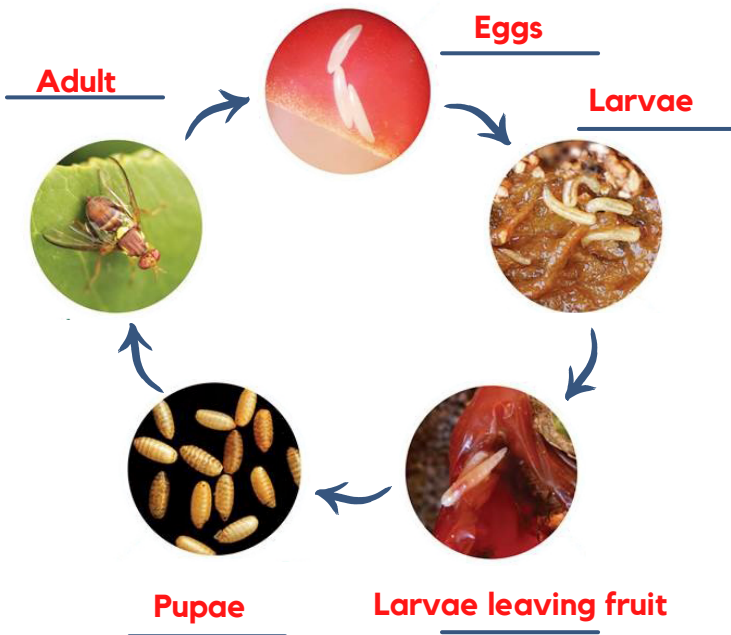


## Life Cycle of the Queensland Fruit Fly

Label each of the life cycle stages next to each picture:  
Pupae, Eggs, Adult, Larvae & Larvae leaving fruit.

Can you write an explanation of how the Queensland Fruit Fly grows and destroys our fruit and vegetables?

The female QFF lays her eggs just under the surface of the fruit skin, using her ovipositor (a pointy egg-laying tube). QFF larvae hatch out of the eggs. The fruit rots on the inside. This makes the fruit unsuitable for humans to eat, and the fruit can't be sold. The growing larvae suck up the rotten jelly-like fruit flesh. When they are big enough, the larvae chew their way out of the fruit. The larvae jump from the fruit into the soil where they pupate in a hard case, morphing into a fruit fly. Fruit flies crawl out of the soil, and fly up into the trees. Mature fruit flies breed and female QFF lay more eggs, ruining more fruit as the life cycle starts again.



## WORD SEARCH

Find the below words:

J I P Q L H H Y H S J M F T D T S P I T  
 T H J D I S V N G L U I Y C G T G F Z V  
 R F C G Y G T C G J K R E N X G R N B V  
 A T W G F H M A P J J Q T P U P A E V Y  
 P S O T T K L P A E J U Q V G R B O M X  
 W I Y Y B O O L D L U R C T B M L J K T  
 A J O H J Q L U U G U M K C L K A F Z K  
 T J N J I B U F E C K R Y E E H R F F E  
 F R O T T E N B O E W W H G E W V R L B  
 A P P P M O S D Z V N A N G Q S A U Q B  
 H T I N S E C T L K I S M S M M E I T B  
 H R H N D A D U L T L P L A X T Q T Y P  
 S K C W O I H Y U M T U O A N B Q K L L  
 M Y A R R A V A L L E Y G S N V Q D T D  
 K K K X S B Q O O S N P R E I D N H D I  
 J E O X K Y L M C F O Y O G J T I H H M  
 A L C G G Y J Y E N X N N S V Y O M K Q  
 F L D A J W D X W V J J P M I L F R N B  
 F Y J Z E V E G E T A B L E S Z Q K X A  
 Z R T G J W O J G I L R U U M U F R H H

- YARRAVALLEY
- OVIPOSITOR
- PUPAE
- QUEENSLAND
- LARVAE
- ADULT
- VEGETABLES
- INSECT
- TRAP
- ROTTEN
- FRUIT
- EGGS